



Sage 300c

Pilot your business across functions, offices, and geographies

Whether your business has one or several locations in the same city or across international borders, Sage 300c helps you manage finances, operations, and inventory in multiple languages and currencies. With real-time, mobile access and visibility across your entire company to keep your business on track, Sage 300c allows you to:

- Break down departmental silos for companywide transparency and improved collaboration.
- Tap into a real-time, unified view of your company's finances and operations.
- Reduce inefficiencies and redundancies so you can optimize company performance, productivity.
- Integrate front-to-back-office processes such as marketing, sales, and customer service.
- Work anywhere and anytime.

Anytime, anywhere mobile access

Sage 300c offers anytime, anywhere, and any-device access to business and transactional data, critical to supporting an increasingly mobile and geographically dispersed business.



What is Sage 300c?

Sage 300c helps small and medium companies manage their entire business across geographies without the cost or complexity of traditional enterprise resource planning (ERP) software. The preferred solution for tens of thousands of companies across the globe, Sage 300c connects the most important aspects of your growing business, including:

- Financials.
- Operations and inventory.
- Project and vendor management.
- Human resource management and payroll.
- Sales, marketing, and customer service.

The advantages keep coming. Sage has an extensive network of third-party solution providers whose add-on solutions extend Sage 300c ever further to meet the specialized needs of your business.

Imagine a world where your business can process orders, fulfill orders on time, make and accept payments, reconcile your books across multiple companies and currencies, pay employees, and manage projects, all with one trusted solution. Welcome to Sage 300c.



"Since we implemented [Sage 300], we are saving 20-30 hours each month in accounting tasks, and we have increased revenues."

Allan Schmidt, president, Vineland Estates Winery

Take the complexity out of managing your financials

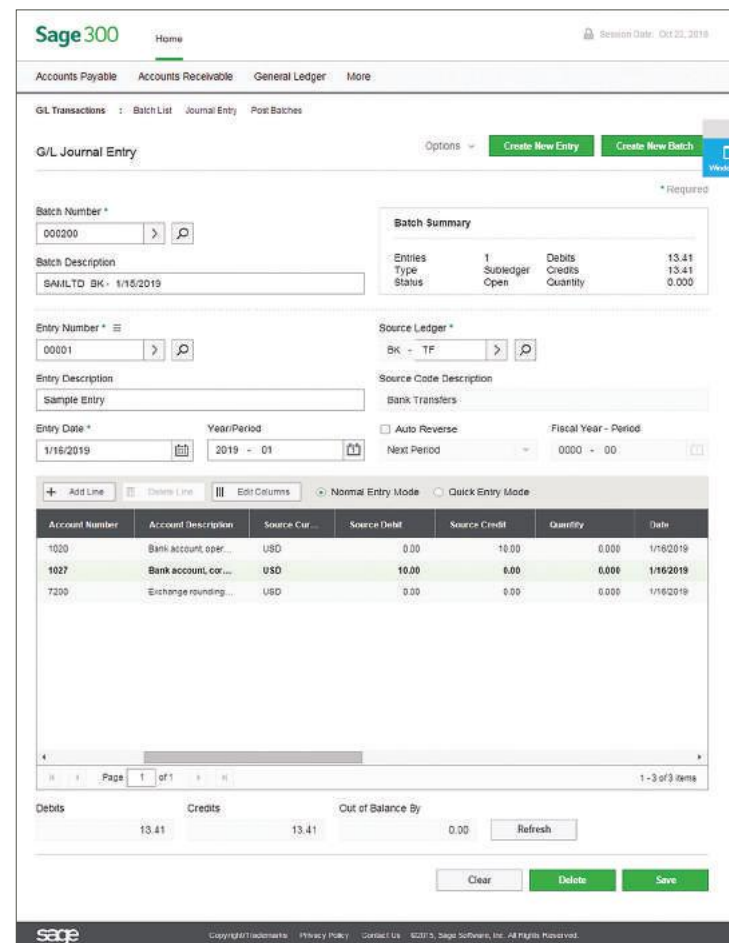
With Sage 300c, you will have an accurate, real-time understanding of your financial position, whether it's cash flow, receivables, or payables across multiple locations, companies, currencies, and international borders. Configurable, simple to use, and accessible anytime, anywhere, Sage 300c helps you stay on top of your business and address financial issues before they become real problems.

Sage 300c helps you manage complex finances and remain compliant with government regulations such as Generally Accepted Accounting Practices (GAAP) or International Financial Reporting Standards (IFRS).

Powerful yet simple

Keep your general ledger up to date in real time and meet your most demanding budgeting and processing needs to maximize the efficiency and accuracy of your financial data with Sage 300c.

- Store up to 99 years of financial data
- Balance your books at every step
- Manage up to ten different account segments
- Print or email reports instantly
- Configure to your unique processes and preferred practices.
- Set up recurring GL entries
- Easily import transactions from other applications or export data



The screenshot shows the Sage 300c 'G/L Journal Entry' interface. It includes fields for Batch Number (000200), Batch Description (SAMILTD BK - 1/15/2019), Entry Number (00001), and Source Ledger (BK - TF). A table below shows account entries:

Account Number	Account Description	Source Car	Source Debit	Source Credit	Quantity	Date
1000	Bank account, eper...	USD	0.00	10.00	0.000	1/15/2019
1027	Bank account, cor...	USD	10.00	0.00	0.000	1/15/2019
7200	Exchange rounding...	USD	0.00	0.00	0.000	1/15/2019

Summary: Debits 13.41, Credits 13.41, Out of Balance By 0.00.

Comprehensive accounting and financial management

- General Ledger
- Accounts Payable
- Accounts Receivable
- Payment Processing
- Bank Reconciliation
- Check and form printing
- Multicurrency support
- Consolidated financials across multiple companies

Manage payables with ease

Streamline your entire cash flow process and save money. Sage 300c ensures rapid entry of vendor invoices, flexible cash disbursement, and check reconciliation. You can prioritize payments, negotiate terms, and reduce bad debts.

- Organize vendor records quickly and easily.
- Import transactions from other applications.
- Automatically distribute invoices to as many general ledger expense or asset accounts you require.
- Set up and schedule recurring payables for invoices paid on a regular basis.
- Calculate tax for vendor invoices or manually distribute tax.
- Print checks in multiple languages, including English, French, and Spanish.

Easily manage multiple companies

When you're keeping track of dealings between multiple entities or subsidiaries, Sage 300c reduces the work required for intercompany accounting. Whether you operate as one company, 10 divisions, or 100 entities, you'll reduce redundant data entry and focus on more revenue-generating activities.

Intercompany transactions in Sage 300c allows you to enter General Ledger and Accounts Payable transactions affecting more than one company and automatically distribute transactions across two or more companies. You can set up multiple companies, close books, and report results by company or consolidated company.

Simplify international commerce and user support

Managing the complexities of a business across geographies is not easy, but Sage 300c makes it far less complicated.

With Sage 300c, you can easily manage international commerce across multiple companies or subsidiaries. You'll have tools to easily maintain an unlimited number of currencies and exchange rate schedules, update exchange rates daily, and post gains or losses from currency fluctuations.

Multilanguage support for English, French, simplified and traditional Chinese, and Spanish is included with Sage 300c and translatable for additional languages throughout the system.

Get paid faster

With Sage 300c, you'll effectively manage your cash flow; track purchase patterns; automate tax calculations, discounts, commissions and due date, and much more. With the help of built-in calculations, you have full control of your receivables and invoicing and save countless hours avoiding errors and eliminating duplicate data entry.

Sage 300c also gives you everything you need to process credit card transactions quickly, easily, and efficiently on a fully Payment Card Industry (PCI)-compliant payments platform. With advanced security such as fraud prevention to protect both you and your customers from unauthorized credit card use, Sage 300c brings together all of your payment activities into one location and offers real-time transaction dashboards and reports, merchant statements, and how-to guidance.

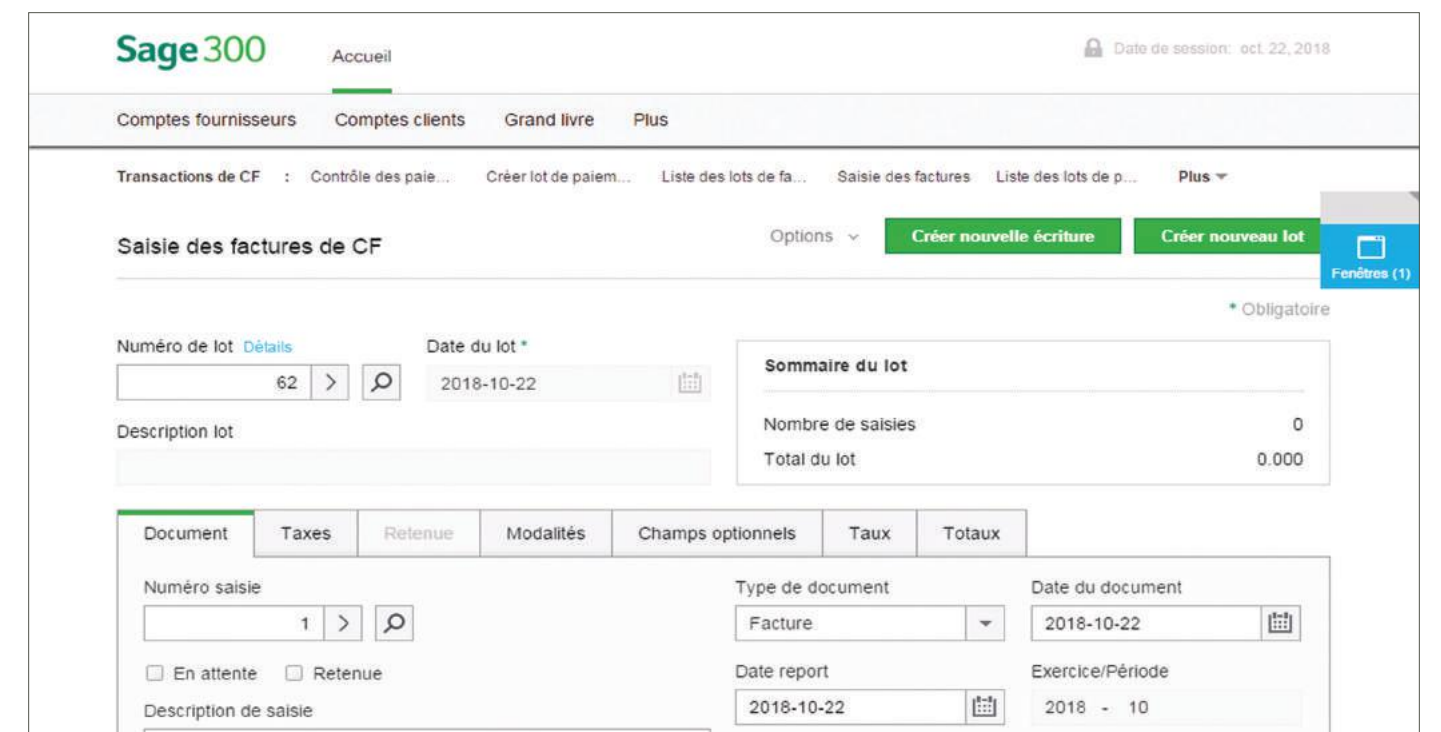
Bank reconciliation in minutes

With Sage 300c, you can quickly and accurately reconcile your bank accounts and perform banking transactions with pinpoint accuracy.

Manage and track your fixed assets

Sage Fixed Assets* can be added to Sage 300c to give you total control over the entire fixed asset lifecycle and ensure that your company is always in regulatory compliance. Sage Fixed Assets offers integration for Accounts Payable/Purchase Order asset creation and automated General Ledger postings. Integrating Sage Fixed Assets to Sage 300c provides a comprehensive fixed asset inventory and tracking solution.

*Sage Fixed Assets is an add-on solution to Sage 300c.



The screenshot shows the Sage 300c 'Saisie des factures de CF' (Invoice Entry) interface. It includes fields for Numéro de lot (62), Date du lot (2018-10-22), and Description lot. A 'Sommaire du lot' (Batch Summary) table is shown:

Field	Value
Nombre de saisies	0
Total du lot	0.000

Document details include: Type de document (Facture), Date du document (2018-10-22), Date report (2018-10-22), and Exercice/Période (2018 - 10).

"One thing that [Sage 300] does particularly well is give us the real-time inventory numbers we need to make informed day-to-day decisions."

Allan Schmidt, president, Vineland Estates Winery

"I know exactly what is on each order and what each of our different accounts owe us. This has cut order-writing time by more than half and put accurate information at my fingertips."

Marni Kontturi, office manager, Clarke Phillips Safety Supply Ltd.

Ship orders on time, manage inventory across multiple locations

With Sage 300c, you'll delight customers, vendors, and your own employees by integrating disparate processes across multiple warehouses, inventory, production, and service departments. Faster, more accurate fulfillment results in satisfied customers, quicker payments, and much greater profitability.

Optimize your inventory

Assert control over your inventory processes and reduce carrying costs while delivering orders on time. With Sage 300c, you can easily take charge of inventory receipts, shipments, returns, and adjustments with multilocation inventory tracking capabilities.

With easily accessible, real time information, make better business decisions regarding what merchandise to stock, pricing, discontinued items, and trend analysis to best determine what's selling and what to market.

Sage 300c offers real-time visibility to inventory data including receipt, shipping information, returns, disposition of goods, and precise value. It also allows you to obtain detailed, current inventory information on demand.

Take control of your stock levels

Sage Inventory Advisor* provides you with an inventory health check, produces quality forecasts, reduces the time spent on manual tasks, and determines the optimal investment needed to achieve target fill rates. It's optimal for companies with one or more warehouses and 1,000+ SKUs.

Strategically manage every aspect of the distribution cycle with efficiency and control.

- Inventory control, forecasting, and optimization
- Serialized inventory and lot tracking
- Purchase Order
- Order Entry
- Credit Card Processing

*Sage Inventory Advisor is an add-on solution to Sage 300c.

Streamline order and shipping processes

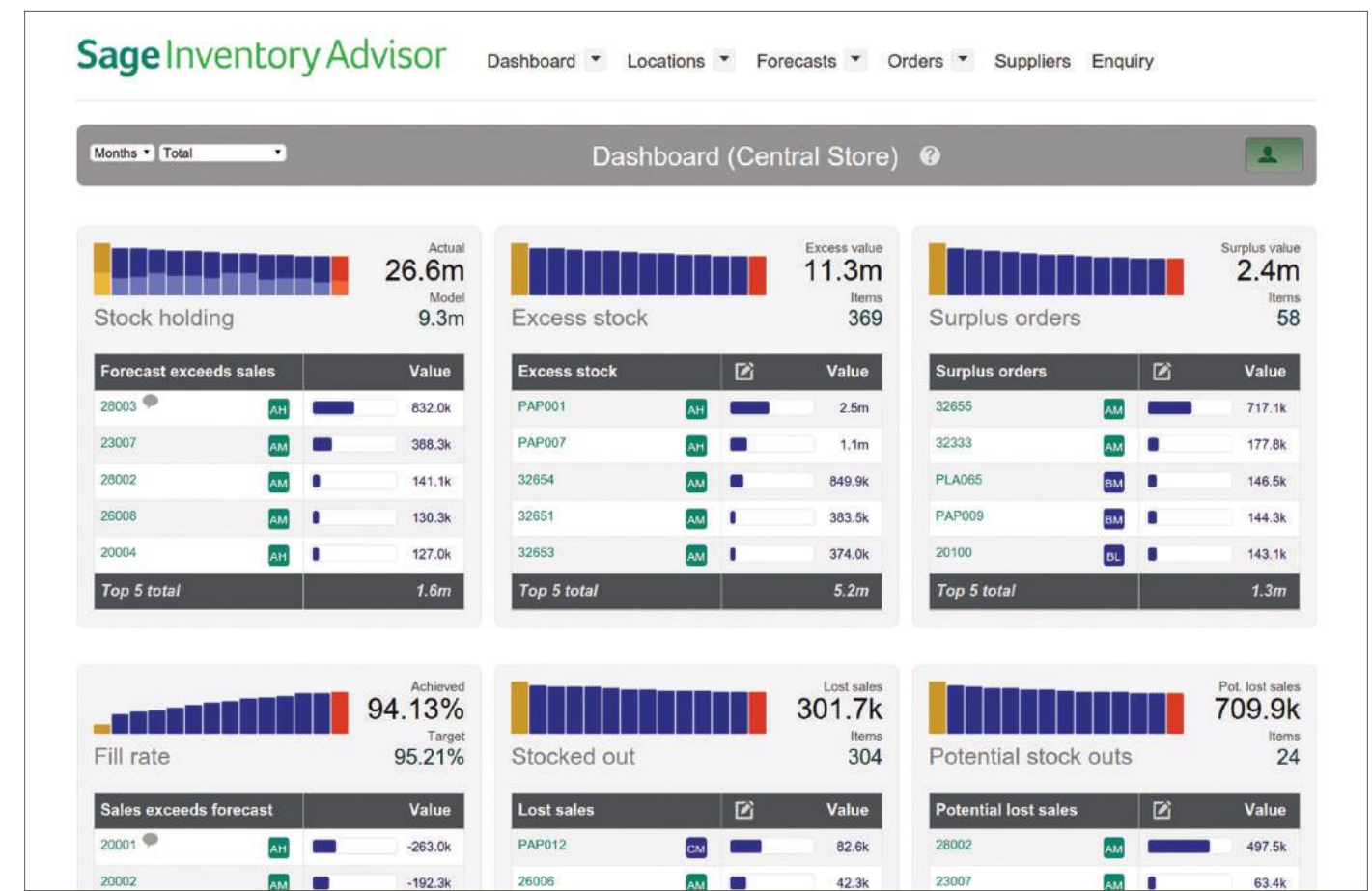
Are your accounting or customer service teams overwhelmed with questions on shipment status, billing, item availability, or returns? Are they tracking orders manually and relying on shop-floor or warehouse staff to determine what's in stock and what can be shipped?

With Sage 300c, your employees will be continuously aware of inventory levels and customer account changes such as alternative items. You will eliminate redundant data entry and automate workflow as well as:

- Set up detailed quotes, back orders, cancellations, shipments, and prepayments.
- Establish data-entry defaults so you can see customer information quickly.
- Gain real-time insight into stock levels, customer details, and shipping information.
- See and enter orders in the currency of your customers.
- View or print reports of transaction details and sales information.
- Track multiple payment schedules and other payment terms.

Strengthen vendor relationships, interaction with streamlined purchasing

Make the right decisions sooner by automating—and adding visibility—to every facet of your purchasing process. Sage 300c keeps you in sync across process requisitions, purchase orders, receipts, invoices, and returns to save you time. All that transparency means everyone works from the same, real-time intelligence. What better way to keep building stronger relationships with your vendors?



“With information readily available at their fingertips, sales representatives can deliver unparalleled customer service and strengthen client relationships. In short, Sage CRM and Sage 300 deliver the business management capabilities we need to stay competitive.”

Jean-Marc Pigeon, president, Inortech, Inc.

Effectively manage projects and track job costs

Keep projects on schedule and on budget with flexible estimating, tracking, and project billing in Sage 300c.

With Sage 300c project job costing, you're better equipped to:

- Control project costs.
- Manage contractors and subcontractors.
- Track costs and revenue down to the finest details on every project.
- Track and monitor original projections and actuals.

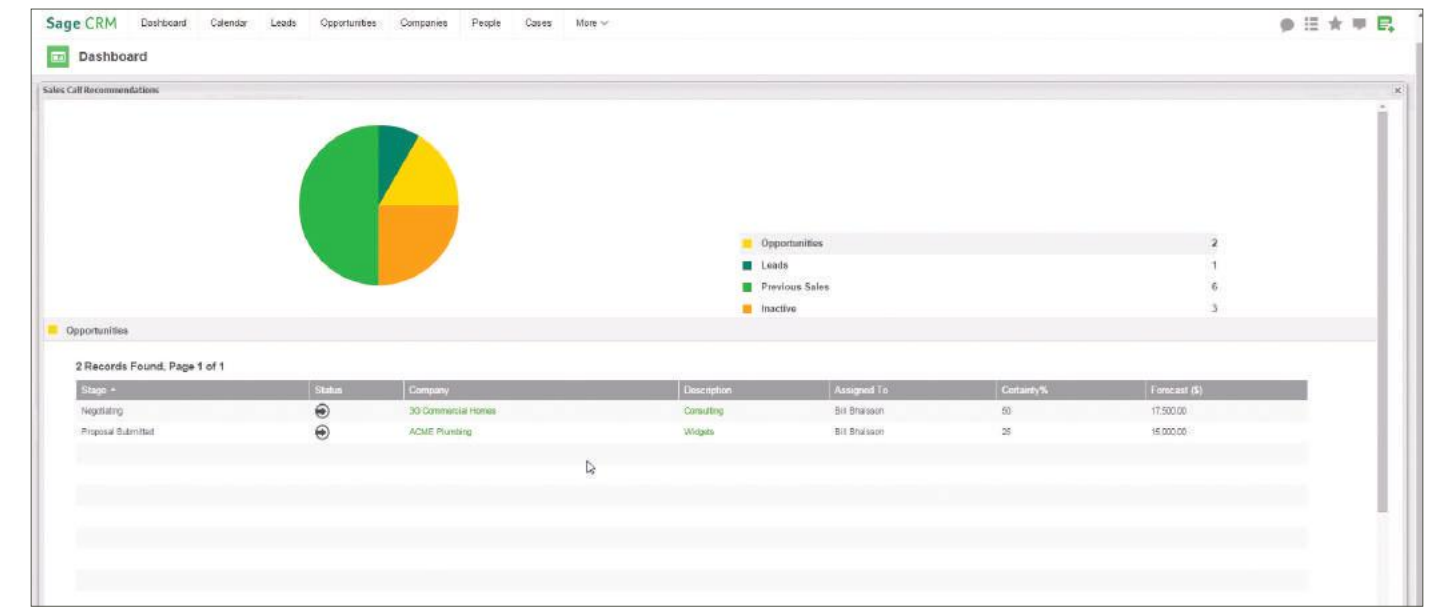
All costs, payables, and receivables can roll up to each area of the project. Overhead, equipment, and materials are allocated to ensure the project is on time and on budget.

Win new business, retain and grow existing customer business

With Sage 300c and Sage CRM, you can have end-to-end visibility of your sales and marketing activities and a single view of the customer across your organization. Open up new opportunities for growth with greater insight into business performance, better efficiency and productivity, and more effective communications.

You have the tools at your fingertips to find new customers, reduce sales cycles, and build lasting, more profitable relationships.

- Track your sales opportunities from lead generation to close.
- Exceed your customers' expectations with outstanding customer service and support.
- Plan, execute, and evaluate the success of your marketing campaigns with ease.
- Enable your workforce to access customer information anytime, anywhere with mobile access.





Easily manage human resources and payroll

- Automated payroll processing for U.S. and Canada
- Affordable Care Act compliance
- Comprehensive reporting

Sage 300c gives you the power to process your payroll processing in house and cost-effectively—or outsource it without losing visibility to payroll transactions. Time allocation and payroll information are entered only once and seamlessly shared throughout Sage 300c, including project costing.

You can use a variety of calculation methods for employee benefits, earnings, and deductions, while easily keeping up to date with the latest changes in tax rates and filing requirements.

Sage also makes it easy for you to meet governmental requirements and address the Affordable Care Act requirements.

Simplify payroll processing

You can easily and cost-effectively manage your payroll throughout your business, including processing paychecks (and direct deposit where available) correctly on time, every time. Payroll-related transactions are posted back to Sage 300c in real time.

Or, if you are looking to outsource payroll but not lose visibility to payroll transactions, Sage 300c offers direct integration with Sage Payroll Services so you can upload general ledger account numbers and bank codes to Sage Payroll Services and easily download payroll transactions back into Transaction Journal Entry. Simplify your payroll processing with selection lists and anytime check processing. We'll keep you in compliance with changing tax laws through quarterly updates, including tax tables.

Optimize human resource management

Sage 300c enables you to decisively meet and respond to HR management challenges. With integrated payroll, benefits, recruiting, employee self-service, and analytics, Sage 300c helps you to maximize every dollar you invest in employees. We call this the Return on Employee Investment.

Easy e-filing

Safeguard your company against tax filing errors and meet all state and federal reporting and payment requirements with Sage Payroll Tax Forms and eFiling by Aatrix. Information in Sage 300c flows directly into tax forms and reports to make filing easier.

Enhance business insight and visibility

Reporting on the most critical aspects of your business—on demand—is critical to operations, management, and compliance. With Sage 300c, you will be able to identify issues before they become major problems for your business.

Intelligent reporting

Design, distribute, and consume reports through a common Microsoft Excel® interface on financial and nonfinancial data. Sage Intelligence can consolidate data from Sage 300c and other data sources to get a single version of the truth in Excel. Analyze and create reports, filter and aggregate data, drill down to transactions, and automatically schedule and distribute reports. Sage Intelligence has multiple report templates that are provided out of the box.

Keep tabs on critical information

With the Sage 300c homepage, you can customize an anytime, anywhere dashboard specific to your business, with key performance indicators (KPI) and access in the office or away through any mobile device.



Gain better visibility to make fast, effective decisions

With a 360-degree view of your business, real-time metrics, and the ability to create personalized dashboards and meaningful reports, you gain live visibility across all departments and companies with Sage 300c business intelligence tools.

See everything in real time

The most important key performance indicators are available on the Sage 300c homepage, giving you an up-to-the-moment overview of your financial and operational performance every time you log on.

- Review real-time metrics and create personalized dashboards.
- Distribute reports with calculated values or embedded formulas—allowing for quick analysis.
- Use prebuilt templates to report on any critical aspect of your company.

With Sage 300c, you'll have critical information at your fingertips for easier, smarter short- and long-term planning. You can leverage widgets and customizable report templates to report on any critical aspect of your company, so you can properly allocate your resources and increase productivity. With the robust business intelligence tools in Sage 300c, you have the visibility, intelligence, and access to key data to make faster and more effective decisions.

With Sage Intelligence, you have access to a suite of prebuilt financial and operational reports that are easy to customize with your Sage 300c data. You can analyze and create reports, filter and aggregate data, drill down to transactions, and automatically schedule and distribute reports. With Sage Intelligence, you spend more time focusing on analyzing and interpreting your information and less time pulling the data together.

- Use drag-and-drop formulas to easily create and manage your financial reporting.
- Develop in-depth financial, operational, customer, and vendor reports.
- Effortlessly consolidate data from multiple companies, divisions, and databases.

Sage Business Care

Successful businesses have one thing in common: They are prepared for the unexpected. That means being ready to respond to challenges as quickly as possible—or better yet, avoid them entirely. Sage is committed to your success. With Sage Business Care—our software assurance and support program—Sage provides the upgrades, personalized service, and value you need to protect and extend the value of your Sage solutions.

There's no better way to protect and extend your software investment than through a Sage Business Care service plan. We deliver value to your organization by helping you reduce the time, resources, effort, and cost of operating your Sage solution.

Training

Whether you are just getting started, looking to increase your knowledge, or want to know everything about Sage 300c, Sage University is your training resource. You'll find that we have hundreds of courses designed for multiple experience levels and job roles. We also offer many certifications. Choose the options that best fit your needs and schedule:

- Anytime Learning provides online, on-demand, 24/7 access training
- Realtime Learning provides online, live, instructor-led training
- Traditional classroom training courses including lecture and hands-on lab courses

Local expertise

Our network of authorized business partners and certified consultants understands the challenges you face as a small or medium sized business. Regionally based, these experienced professionals have helped thousands of companies get up and running quickly on Sage 300c—and they provide the ongoing service you need for continued success.

By maintaining an annual Sage Business Care plan, you'll benefit from:

- Continuous improvement with regular software updates to help you boost competitiveness.
- Fast, accurate responses and solutions to software issues and other technical challenges.
- Value-added solutions to help manage more of your business.
- Discounts on support, services, events, and other resources.
- Minimized business risk.



For more info, visit: www.theanswerco.com/sage-300
info@theanswerco.com
1-866-670-6686
Offices in New Westminster, Calgary, Edmonton, Winnipeg and Toronto.



THE ANSWER COMPANY