


DATASHEET

Sage Budgeting and Planning

Take control of your business with a flexible, integrated, simplified, and collaborative budgeting and planning solution that shortens your planning cycles.



A flexible and powerful planning and budgeting application, Sage Budgeting and Planning helps enable quicker, more informed business decisions by automating and shortening the budgeting and planning cycles. It makes the planning process more efficient, encourages collaboration across all lines of business, and ties budgeting activities to actual results.

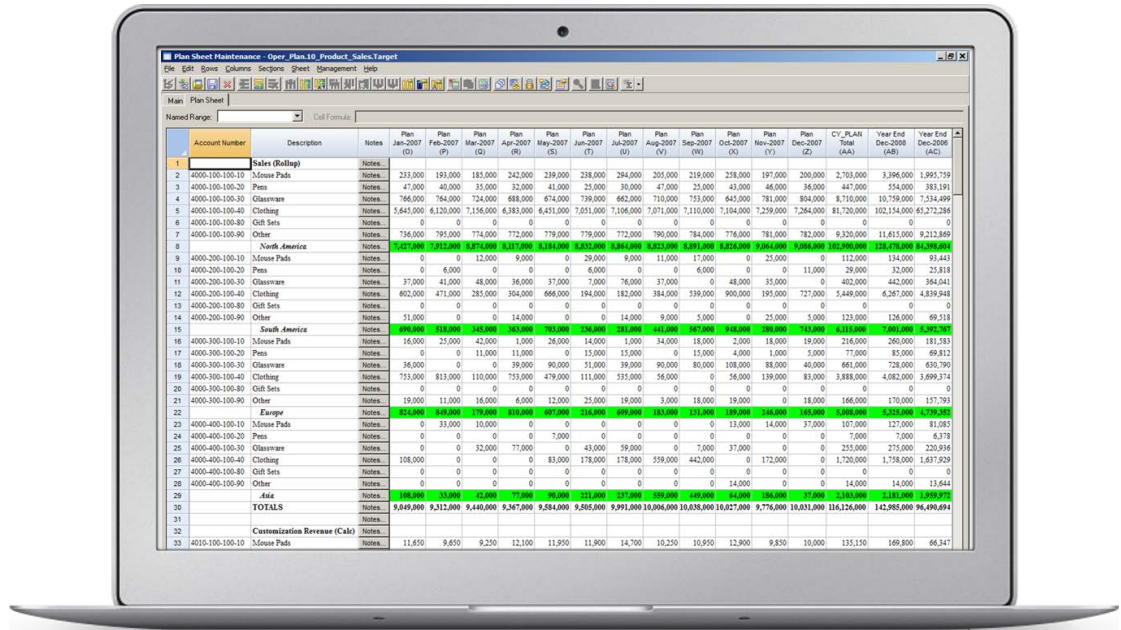
Organize and manage the process

Free yourself from time-consuming spreadsheet mechanics and focus on strategic budgeting and planning. With Sage Budgeting and Planning, you improve the flow of key information, such as business drivers and transaction data, through templates, automatic distribution and consolidation of the budget, central control over budget revisions, real-time seamless integration of data sources, and built-in security mechanisms. With more control over your budgeting and planning process, you can create effective, more accurate budgets and forecasts, and render a true analysis of company performance.

Bottom-up or top-down budgeting — or a combination of both

Whether you need to allocate a revenue target or cost projection from the top down, or consolidate several different budget plans from the bottom up, Sage Budgeting and Planning accommodates your organizational structure and provides a purpose-built solution. Strong management capabilities allow for seamless integration of budget submissions from multiple departments, using “Plan Sheets” that have a familiar spreadsheet look and feel.

- Integration with all enterprise data
- Integration with General Ledger (GL)
- Email notification
- Spreadsheet-like control



Sage Budgeting and Planning - Plan Sheet

Take "command" of your budget.

The Plan Manager, the "command center" of Sage Budgeting and Planning, coordinates the consolidation and distribution of your Plan Sheets into an efficient, seamless, and flexible budgetary system. Within Plan Manager, Plan Sheets are established, reviewed for status and revision, locked for control, and managed for consolidation and distribution.

Control access to sensitive data.

Sage Budgeting and Planning provides comprehensive security so you can easily limit use of plan sheets to authorized users—as well as define their ability to view, edit, or modify information.

Implement in hours instead of weeks.

The latest release of Sage Budgeting and Planning includes a new Implementation Wizard that simplifies the setup and connection to your business management solution. From there, the Quick Start guide includes a library of sample templates. Simply choose the one that most closely matches you operation. In a very short time you can view your data in the Plan Sheets and begin to customize your budgets "out of the box".

Integrate your budget with business management data sources.

Once your system is set up, Sage Budgeting and Planning integrates financial information from your general ledger. You can also calculate and deploy values from other data sources including Microsoft® SQL Server,® Access,® Dbase,® Excel,® and any ODBC- or OLE-DB-compliant database.

Access your information quickly and easily.

A single database improves real-time accessibility to information and virtually eliminates time spent on coordination, distribution, and collection of data.

Automatically update users on activity in the planning process.

Using email notification, critical information is sent to the appropriate reviewer or budget administrator as the status of the plan changes.

Transfer information directly from the source.

You can insert rows into a Plan Sheet directly from your chart of accounts or using any business management data.

Shorten planning cycles and improve decision making within the organization.

Plan Manager provides a Windows® interface with access to and control of any company budget. Simple drag-and-drop techniques support rapid reorganization and easy management of budgeting and planning. Sage Budgeting and Planning helps organizations quickly respond to rapidly changing business conditions with detailed analysis tools.

Analysis features provide more powerful insight.

Sage Budgeting and Planning gives you the power to analyze budget and actual data with Dimensions and Microsoft SQL Analysis Services. Within a data cube, you can view data in several dimensions (such as by territory, product, and customer), change an assumption or driver, and return it to the plan.

Advanced Reporting Capabilities using OLAP Cubes.

Sage Budgeting and Planning allows you to use Microsoft Excel Analyzer to retrieve information from your OLAP cubes so you can present numbers clearly and effectively. Additionally, you can build multidimensional cubes and launch the Analyzer Tool directly from Sage Budgeting and Planning.

Support "what-if" analysis.

Reorganize budget structures, including changing planning assumptions and variable drivers. These changes easily support corporate reorganization considerations.

Incorporate data from organization wide systems to create multidimensional plans.

Different sets of data can be grouped or tiered using system—(such as General Ledger) or user-defined dimensions.

Comprehensive and powerful calculation techniques.

Using a comprehensive calculation engine to retrieve values for budgeting, planning, and analysis, Sage Budgeting and Planning enables you to link key business drivers to the budget, spread costs or revenue targets over defined periods of time, and model seasonal trends.

Create a virtually unlimited number of formulas and formula lines.

Use formulas to annualize sales for the last quarter for a fast-growing company, derive account values as a percentage of previous year's sales, compute average daily balance of debt for an interest calculation, or use database queries to retrieve company-wide information.

Define global and local formulas.

Global formulas can be used by anyone in the system, eliminating the need for users to re-key standard formulas. Local formulas can be created for and attached to a specific Plan Sheet.

Flexible spreading techniques.

With Sage Budgeting and Planning you can apply calculations to a group of columns and spread back to individual periods using factors such as seasonal trends, user-defined business drivers, and prior year activity.

Track general ledger balances

Track fixed or relative period ranges; actual, budget, or statistical balances; beginning, change, ending, or average daily balances; any account or ranges of accounts; and multiple companies.

"Sage Budgeting and Planning allows us to manage the budget using non-financial data that represents the factors that drive our business and help us accurately forecast expenses."

Craig Strohecker
Christian Broadcasting Network, Inc.

Management Features

- Allocate budgets from bottom up, top down, or a combination of both. You can also consolidate several different budget plans.
- Strong management capabilities allow for seamless integration of multiple department budgets, using "Plan Sheets" that have a familiar spreadsheet look and feel.
- Automatic integration of your most important financial information is available directly from your general ledger.
- Comprehensive security lets you limit the use of Plan Sheets to authorized users as well as define their ability to view, edit, or modify information.

Analysis Features

- Create "what if" analyses to reorganize budget structures so you can view the impact of potential changes to your plan.
- Extract important data and create relationships between data points to illustrate patterns, trends, and exceptions that indicate how your business is doing—and where it is going.

Calculation Features

- Apply calculations to a group of columns and spread back to individual periods using factors such as seasonal trends, business drivers, and prior year balances.
- Global formulas can be used by anyone in the system, eliminating the need for users to re-key standard formulas.



For more info, visit: <https://www.theanswerco.com/sage-budgeting-and-planning/> or contact us at **1-866-670-6686**

©2018 The Sage Group plc or its licensors. Sage, Sage logos, Sage product and service names mentioned herein are the trademarks of The Sage Group plc or its licensors. All other trademarks are the property of their respective owners. NA/WF 183498.